

# 1978 TERRACE FALL PROGRAM



**Northwest  
Community College**

# NORTHWEST COLLEGE FALL PROGRAM TERRACE 1978

This brochure is divided into 2 main groupings:

1. Vocational and Trades Training Evening Program.
2. General Interest and University Transfer Courses.

## ADMISSION:

In general there are no specific admission requirements for these programs except those which are specifically mentioned in the separate course descriptions.

Traditionally almost half of the persons enrolled in General Interest and University transfer courses are taking them for personal enrichment only.

Persons who are interested in any course but have reservations about undertaking them are invited to telephone the College for further information or counselling (phone 635-6511).

## REGISTRATION FOR COLLEGE COURSES

Almost all courses in these listings have limited maximum enrolments. Registrations will be accepted at the College, 5331 McConnell Ave., Terrace, on the following dates, on a 'first come' basis. -NO REGISTRATIONS WILL BE ACCEPTED WITHOUT FULL PAYMENT OF FEES.

Registrations will be accepted by mail provided that space is still available. Mail registrations must be accompanied by a cheque or money order payable to Northwest College for the full amount of the fee for the course and the name, address, and telephone number of the registrant. Be sure to specify the course and section number or starting date of the course.

Address mail registrations to:

Fall Program Registrations  
Northwest College  
P.O. Box 726  
Terrace, BC.  
V8G 4C2

Telephone 635-6511

## DATES AND TIMES FOR IN PERSON REGISTRATION:

August 30, 31	- 8:30 a.m. - 4:00 p.m.
September 1- 8	- 8:30 a.m. - 4:00 p.m.
September 11 - 14	- 8:30 a.m. - 4:00 p.m.
September 15	- 8:30 a.m. - 4:00 p.m.
September 18 - 19	- 8:30 a.m. - 4:00 p.m.
	- 6:00 p.m. - 8:00 p.m.

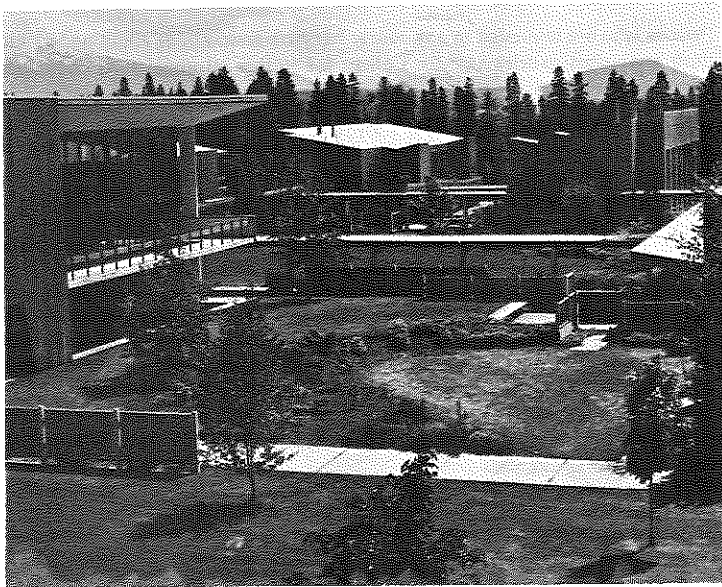
## REFUNDS

A complete refund of fees is made only when a course or program is cancelled.

### SCALE OF WITHDRAWAL REFUNDS

- (a) Withdrawal within two weeks after commencement of classes.
- (b) Withdrawal within four weeks after commencement of classes.  
50 percent refund.
- (c) Withdrawal more than four weeks after commencement of classes.  
No refund.

The college reserves the right to cancel any course which does not received sufficient enrolment.



## VOCATIONAL AND TRADES TRAINING DIVISION

The following evening programmes will be offered at the Terrace campus during the Fall 1978 semester.

Registration is at the college office between the hours of 8:30 a.m. and 4 p.m. beginning 1 September. The college will also be open from 6 p.m. to 8 p.m., 11- 14 September and 18 - 19 September for registration and payment of fees. Further information may be obtained from the Registrar or from Mr. Dick Kilborn at 635-6511

### AIR BRAKES

This is a course to prepare drivers for a written and practical test on the operation and maintenance of air-brake systems for either on-highway or off-highway vehicles. Those taking off-highway exams will be required to pay the Ministry of Transport a five dollar examination fee.

This course will also include young persons who wish to drive air-equipped vehicles. Successful completion will give a Driver's License air endorsement.

Starting Dates - 18 September and 23 October

Time - 7 - 10 p.m.                      Total Hours - 24 each course

Fee - \$30.00 + \$2.00 for manual

Days - Mondays and Wednesdays

### SMALL ENGINE REPAIR

This course will cover outboard motors, lawn mowers, chain saws, etc., and is intended to improve the skills of persons maintaining and working with small motors.

Starting Date - 18 September

Time - 7 - 10 p.m.                      Total Hours - 72

Days - Mondays and Wednesdays

Fee \$72.00

### BASIC WELDING

This course is intended to assist persons working in trades which require welding, but do not warrant the employment of a full time welder.

Course A

Starting Date - 18 September 1978

Time - 6 - 9 p.m.                      Total Hours - 72

Fee - \$72.00

Days - Mondays and Wednesdays

Preference on this course is to NCC day students

Course B

Starting Date - 19 September 1978

Time - 6 - 9 p.m.                      Total Hours - 72

Fee - \$72.00

Days - Tuesdays and Thursdays

## BASIC CABINET CONSTRUCTION

This program covers the basic operations of Hand and Power tools as used in the construction of kitchen cabinets.

Instruction during the course includes:

- Base or Lower Kitchen Cabinets
- Upper Kitchen Cabinets
- Upper and Base Bathroom Cabinets
- Drawers and Doors for above Cabinets
- Application of arborite materials

Starting Date - 18 September 1978

Time - 7 - 10 p.m.

Fee - \$30.00

Total Hours - 30

Days - Mondays and Wednesdays

## AUTOMOTIVE ELECTRICAL TUNE-UP

This course is designed to up-grade tradesmen in the use of electronic tune-up devices and servicing emission control systems.

Starting Date - 18 September 1978

Time - 7 - 10 p.m.

Fee - \$24.00

Total Hours - 24

Days - Mondays and Wednesdays

## BLUEPRINT READING FOR CARPENTRY

This course is to assist those presently working in the Carpentry Trade.

The program will include:

- Reading Drawings
- Elevator Drawings
- Floor Plans
- Symbols and Notations
- Scaling

- Structural Information
- Detail Drawings
- The Plot Plan
- Trade Information
- Evaluation

Starting Date - 19 September

Time - 7 - 10 p.m.

Fee - \$30.00

Total Hours - 30

Days - Tuesdays and Thursdays

## SURVIVAL FIRST AID

The purpose of this course is to provide an individual with knowledge and skills that are necessary for the emergency care of an injured person pending the arrival of qualified first aid or medical personnel. Courses will be offered on Saturdays when sufficient applications have been received, and are open to those employed in industry or business where certification is relevant or to students in trades and vocational courses. The full program is completed in one day.

Fee - \$12.50, including examination

## HEAVY DUTY MECHANICS - Upgrading for Trade Qualifications

## AUTOMOTIVE MECHANICS - Upgrading for Trade Qualifications

## CARPENTRY - Upgrading for Trade Qualifications

The objective of each course is to assist tradesmen in industry in upgrading their theoretical abilities sufficiently to meet the standards established by the Apprenticeship and Tradesmen's Qualifications Act for the certification of tradesmen. Persons completing these courses must apply to the B.C. Ministry of Labour to arrange an examination.

Fee - \$60.00 for each course

Time - 20 sessions, 3 hours each

Heavy Duty - Mondays and Wednesdays, 7 - 10 p.m.  
beginning 18 September

Automotive - Tuesdays and Thursdays, 7 - 10 p.m.  
beginning 19 September

Carpentry - Mondays and Wednesdays, 7 - 10 p.m.  
beginning 18 September

## BUSINESS OFFICE TRAINING PREREQUISITE

A course designed for those people who have not had Commercial training in High School or who have not had business experience or who have been out of school for several years. The course covers the operation of a ten key adding machine, business arithmetic and record keeping. It is recommended that students complete this course before taking ACC 1.

Fee - \$40.00

Time - 2 sessions, 2 hours each night, 7 - 9 p.m.

Days - Mondays and Wednesdays, beginning 18 September

## BOOKKEEPING ( ACC 1 )

This is an introductory course into the fundamentals of bookkeeping. It is identical to our regular day course and requires a considerable number of home assignments. Routine profit and loss, balance sheets and payroll calculations are included. Completion of this module carries credit towards a Northwest College Business Certificate.

Students who have previously completed ACC 1 may enroll for ACC 2 since both classes will be conducted by the instructor at the same time. ACC 2 is also identical to our day program.

Students should have access to a 10 key adding machine. Areas of study will include: Accounts Payable; Accounts Receivable; Cash Flow; Bank Reconciliation; Promissory Notes and Adjustments. Completion of this module carries credit towards a Northwest College Business Certificate.

Fee - \$60.00 plus book

Time - 7 - 10 p.m.

20 Sessions

Days - Tuesdays and Thursdays

Starting Dates - 19 September 1978

## BUSINESS MANAGEMENT

This is an introductory course into the principles and practices of management. It is designed for those who are developing an interest in management and for those whose careers may be advanced by additional training or a refresher course. Areas of study will include Organizing, Budgeting, Planning, Scheduling, Motivation, Coordinating, Regulating and Deciding. Completion of the course carries credit towards a Northwest College Business Certificate.

Fee - \$40.00 plus books

Time - 20 sessions, 2 hours each, 7 - 9 p.m.

Days - Mondays beginning 18 September 1978

## PERSONNEL MANAGEMENT

This is an introductory course intended for those who are in supervisory positions as well as for those who desire to enter the management field. An overview of personnel management will be presented with emphasis on recruitment, selection, testing, placement, training, performance, job evaluation, wage and salary administration. Completion of this course carries credit towards a Northwest College Business Certificate.

Fee - \$40.00 plus book

Time - 20 sessions, 2 hours per night, 7 - 9 p.m.

Days - Tuesdays, beginning 19 September 1978

## PRINCIPLES OF SUPERVISION

The content of this course is specifically designed for the first line supervisor who has to cope with the responsibilities of handling people. It should also be of benefit to managers of small businesses and to those who are preparing themselves for advancement. Topics studied will include: Human Relations and the Individual; Communicating with the Public; The Art of Leadership; Organization; Accident Prevention; How to give Instruction; How and When to Discipline; Handling Grievances; Planning Work Schedules and Rating Yourself. Completion of this course carries credit towards a Northwest College Business Certificate.

Starting Date - 20 September 1978

Time - 7 - 9 p.m.

20 Sessions - 2 hours each

Fee - \$40.00 plus book

days - Wednesdays

## MEDICAL TYPING (T 3B)

This course is intended for practising stenographers who wish to expand their skills into the medical field. Prerequisite of the course: At least 50 wpm net.

Instructional features:

1. Production practice in preparation of medical reports, case histories and correspondence.
2. Medical terminology and spelling.
3. Improved understanding of medical terminology.

Completion of this course will carry credit towards the Northwest College Medical Stenographer's Certificate.

Fee - \$40.00

Time - 20 sessions, 2 hours per night, 7 - 9 p.m.

Days - Mondays and Wednesdays, beginning 18 September

## STATISTICAL TYPING (T 6)

This course will include:

1. Tabulations;
2. Business papers with tabulated reports;
3. Business letters with tabulated tables;
4. Various accounting reports, including income statements, balance sheets and schedules;
5. Related information concerning typing of figures, centering, and various other aspects of statistical typing.

Requirements: Experienced typists only. This is not a beginner's course. Completion of this course carries credit towards a Northwest College Business Certificate.

Fee - \$40.00

Time - 20 sessions, 2 hours each, 7 - 9 p.m.

Days - Tuesdays and Thursdays, beginning 19 September

## COMMERCIAL LAW

This course will examine the law related to every day business situations. Topics for study include: Introduction to Law; Contracts; Sale of Goods and Consumer Protection; Secured Transactions and Creditor's Rights; Agency and Partnership; Corporations; Torts and Insurance; Real Property; Labour Law; Tax Legislation. Completion of this course carries credit towards a Northwest College Business Certificate.

Fee - \$40.00 plus books

Time - 20 sessions, 2 hours each, 7 - 9 p.m.

Days - Thursdays beginning 21 September 1978

## VOCATIONAL ENGLISH

This course is oriented towards pre-vocational and commercial people. It is designed to help those who need a refresher course or who have specific problems with grammar, usage and composition.

Fee - \$40.00

Time - 20 sessions, 2 hours each

Days - Tuesdays and Thursdays, 7-9 p.m.

beginning 3 October

## VOCATIONAL MATHEMATICS

This course is oriented towards pre-vocational and trades people. It is designed to help those who need a refresher course or who have specific problems with shop mathematics. It will cover fractions, decimals, percentage, measurement, and problem solving.

Fee - \$40.00

Time - 20 sessions, 2 hours each

Days - Tuesdays and Thursdays, 7 - 9 p.m.

beginning 26 September 1978

## DC ELECTRONICS

No prerequisite required other than a knowledge of algebra. Discusses matter, atoms, current flow, voltage, drops, series and parallel circuits, magnetic fields, meters and their use, 20 lab experiments.

Fee - \$50.00

Total Hours - 50 (See note on next page.)

## AC ELECTRONICS

Prerequisites - Course 21 or equivalent knowledge. Discusses wave forms, period, frequency, AC meters, oscilloscope, series and parallel circuits, RC filters, phase shifts, reactance, vectors, transformers, trigonometry, resonance, 8 experiments. Supplementary lessons - vector algebra (complex numbers as applied to AC circuits).

Fee - \$50.00

Total Hours - 50 (See note on next page.)

## SEMICONDUCTOR DEVICES

Prerequisites - Course 21 and 22 or equivalent knowledge. Discusses diodes, zener diodes, bipolar transistor operation, field effect transistor operation, thyristors, uni-junction transistors, special diode circuits, integrated circuits, optoelectronic devices and applications, 11 experiment. Supplementary information - bipolar transistor parameters.

Fee - \$50.00

Total Hours - 50 (See note on next page.)

## ELECTRONIC CIRCUITS

Prerequisite - Courses 21 - 23 or equivalent knowledge. Discusses amplifier functions and configurations, classes of operation, audio, video, RF, IF amplifiers, voltage multipliers, voltage regulation, power supplies, oscillators, RC wave shaping circuits, clippers, AM, FM, SSB modulation, extensive use of meters and oscilloscopes to perform 18 experiments.

Fee - \$50.00

Total Hours - 50 (See note on next page.)

## ADVANCED DIGITAL TECHNIQUES

Prerequisites - Courses 21 - 24 or equivalent knowledge. Discusses TTL, ECL, CMOS, PMOS, NMOS integrated circuits, SSI, MSI, and LSI, ROM'S and PLA'S micro-processors and microcomputers. Designing logic circuits through the use of truth tables, Boolean algebra and Karnaugh mapping. Also includes flip-flops and registers, sequential and combinational logic circuits, frequency counters. There will be 24 experiments.

Fee - \$75.00

Total Hours - 75 (See note on next page.)

## NOTE:

Courses on page 8 are Heath Continuing Education self - study programs containing merous lab experiments and unit tests as well a 33 1/3 rpm introductory records. In some areas supplementary lessons have been added.

A pre-test for any of the above courses will establish prerequisites. The pre-test and the final exam for each course all consist of 50 multiple choice questions and require a 60% score to pass. Courses are conducted concurrently and students may study at their highest level of qualifications.

Starting Date - 19 September 1978

Time: 7 - 10 p.m.

Days - Tuesdays and Thursdays

Total combined registration is limited to 16.

## MEAT CUTTING

This is a short course in the fundamentals of meat cutting and is intended primarily for hunters who want to cut their own game. It will include sharpening and maintenance of the various types of knives, sanitation and the actual cutting of meat. Enrollment is limited to ten students.

Starting Date - 16 October 1978, Mondays and Wednesdays

Time: 7 - 9 p.m.

Total Hours: 20

Fee: \$20.00

## CAKE DECORATING

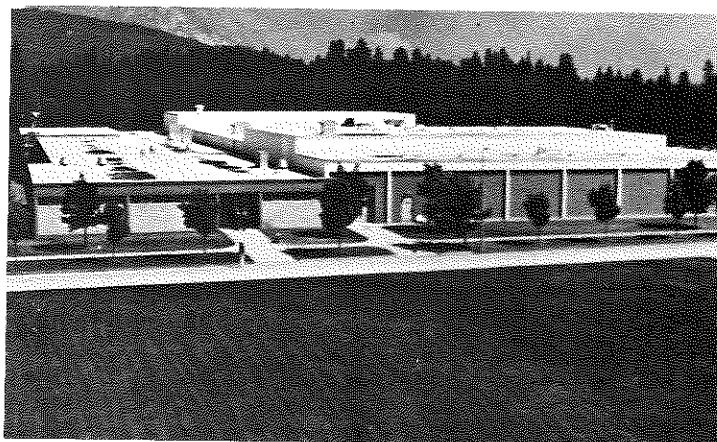
This course is designed for housewives and cover all basic concepts of cake decorating. Content: Border Design; Flowers; Tube Writing; Sugar Molds; Fundamental Decorating Techniques; Special Techniques.

Starting Date - 10 October, Tuesdays and Thursdays

Time - 7 - 9 p.m.

Total Hours - 30

Fee: \$30.00



# NORTHWEST COMMUNITY COLLEGE GENERAL INTEREST AND UNIVERSITY TRANSFER TERRACE — FALL PROGRAM

Fees for the following courses are \$25.50 per course per semester. Persons interested in undertaking these courses for university transfer or general interest can obtain further information at the college at the time of registration. See the college admission and registration procedures at the beginning of this book.

Senior citizens (60 years and over) - no tuition is charged.

For further information on this program for full-time or part-time students contact the college in Terrace at 635-6511 or drop in - 5331 McConnell Avenue.

## COURSE OFFERINGS - Fall 1978, Terrace.

### BIOLOGY 101-3 — Introductory Biology 1

Introductory biology covering selected aspects of first year university biology. Topics included are animal behavior, ecology, genetics, evolution. Lecture and Lab each week.

Section: A005

Lectures: Wednesday & Thursday  
10:30 - 12:00 noon.

Laboratory: Wednesday 1:00 - 4:00 p.m.  
or Friday 1:00 - 4:00 p.m.

Instructor: Alan Gottesfeld.

### CHEMISTRY 101-3 — Introductory Chem. 1

This is a basic first year course in chemistry which will enable students to pursue further courses in all areas of Science and in Engineering.

#### Topics:

- A review of some basic principles.
- Basics of quantum mechanics and electronic configurations.
- The periodicity of chemical and physical properties.
- Chemical bonding.
- Liquids, solution strengths and volumetric analysis.
- Properties of gases.
- Chemical equilibrium in both gases and solutions.

Section: A 007

Lectures: Monday & Thursday  
1:00 - 3:00 p.m.

Laboratory: Tuesday 1:00 - 4:00 p.m.

Instructor: Norm Webster

### ENGLISH 101-3 — Literature and Composition 1

Literature and Composition. Reading and discussion of modern autobiography, fiction and poetry, with student written assignments in response.

Section: A 013

Lectures: Monday & Tuesday  
10:30 - 12:00 noon.

Instructor: George Stanley  
Section: A 014

Lecture: Tuesday 7:00 - 10:00 p.m.

Instructor: Maureen Bostock

### ENGLISH 203-3 — Canadian Literature: to WW11

The English literature of Canada from its beginnings to World War Two. Reading and discussion, with student written assignments in response. Some of the writers who will be read are: Stephen Leacock, Emily Carr, Sinclair Ross, Frederick P. Grove, Malcolm Lowry, Morley Callaghan, Earle burney, Dorothy Livesay, and Raymond Souster.

Section: A 018

Lecture: Tuesday 1:00 - 4:00 p.m.

Instructor: George Stanley.

### GEOGRAPHY 101-3 — Introduction to Geography 1

This university transfer course will examine cultural landscape and the inter-relationship between man and the land.

Section: A 020

Lecture: Monday 1:00 - 4:00 p.m.

Instructor: Ian Anderson.

### GEOGRAPHY 241-3 — Physical & Cultural Geography of Canada

An overview of regional differences in terms of economic development and urbanization; communication systems.

Section: A 021

Lecture: Monday 7:00 - 10:00 p.m.

Instructor: Ian Anderson.

### HISTORY 105-3 — Canada to the late 19th century

This is an attempt to make the more remote past of this country meaningful to us today. We shall look at the historic inheritance of English and French-speaking Canada in the context of social and economic structure and by way of comparison with similar developments in Europe and in the United States. We shall focus on the works of younger scholars and discuss a variety of interpretations.

Section: A 026

Lecture: Friday 9:00 - 12:00 noon.

Instructor: Peter Weber

### **MATH 081-0 — Preparation for College Mathematics 1**

This course, is designed for students who wish to complete Math. 11 (academic). Programmed instruction is used to enable each student to proceed at his or her own speed. Students who do not complete it within the semester are encouraged to do so in Math. 082 (see below). The objective is to give individuals as much flexibility as possible.

**Prerequisite: Math. 10 or permission of instructor.**

Section: A 034

Lecture: Wednesday 7:00 - 10:00 p.m.

Instructor: Walt McIntyre

### **MATHEMATICS 101-3 — CALCULUS 1**

An introduction to the basic techniques of differential calculus, designed to meet the needs of Science and Engineering students at first year university level.

Topics:

Limits, the derivative, differentiation of sums, products, quotients function of functions (the chain rule) and trigfunctions. Curve sketching and the mean value theorem are also studied.

**Prerequisite: Math 12 (minimun Grade B) or permission of instructor.**

Section: A 035

Lectures: Monday, wednesday, & Friday  
9:00 - 10:30 a.m.

Instructor: Carolyn Williston

### **PHILOSOPHY 101-3 — Itroudction to Philosophy**

Begins with a brief survey of traditional philosophy and then attempts to deal with the problems of men through an analysis of some of the problems of philosophy. Course content includes an introduction to philosophical inquiry, human behavior, mind-body problems, knowledge and certainty.

Section: A 037

Lecture: Wednesday 1:00 - 4:00 p.m.

Instructor: Rolf Nosterud.

### **PHYSICS 101-3 — Introductory Physics**

An introductory survey of mechanics and heat; kinomatics and dynamics of particles, work, energy, momentum, rotational motion, simple harmonic motion, temperature scales, thermal expansion, heat transfer, specific heats.

Section: A 038

Lecture: Monday 7:00 - 10:00 p.m.

Laboratory: Thursday 7:00 - 10:00 p.m.

Instructor: James Ho

### **POLITICAL SCIENCE 101-3 — Canadian Politics 1**

An examination of the institutions and processes of Canadian Government. Analysis will be made of the Canadian social structure and political culture. Parties, pressure groups, social movements, federalism and the legislative, executive and judicial aspects of government will be studied.

Section: A 040

Lecture: Wednesday 7:00 - 10:00 p.m.

Instructor: To be arranged

### **PSYCHOLOGY 101-3 — Introduction to Psychology 1**

A survey of major findings in psychology with an emphasis on the psychological approach to the study of behavior. Selected topics include brain processes, learning, cognition, perception, motivation, and emotion.

Section: A 042

Lectures: Thursday 9:00 - 10:30 a.m.

Friday 10:30 - 12:00 noon

Instructor: Andre Klingner

### **PSYCHOLOGY 201-3 — Human Development**

This is a second year level psychology course dealing with the psychological development of the child. Topics will include pre and post-natal development, perception, learning, language acquisition, thinking, and personality development.

Section: A 045

Lecture: Thursday 7:00 - 10:00 p.m.

Instructor: Andre Klingner

### **PSYCHOLOGY 211-3 — Experimental Design and Statistical Procedures in the Social and Physical Sciences**

This course will introduce procedures used in the gathering, analysis and description of data. Surveys, average tendencies, testing of hypotheses (theories), probability, and tests of significance will be covered.

**Prerequisite: Grade 12 Math or permission of instructor.**

Section: A 047

Lecture: Monday 7:00 - 10:00 p.m.

Instructor: Jeff Marvin

### **SOCIOLOGY 101-3 — Introduction to Sociology 1**

Canadian Unity for Whom?

A critical examination of the structure of society through major concepts in sociology: culture, socialization, primary groups, status and role and associations. The emphasis will be on Canada and the Canadian community in particular. In addition, different ways of doing research will be considered.

Section: A 051

Lecture: Tuesday 1:00 - 4:00 p.m.

Instructor: Jake Muller

### **WOMEN'S STUDIES 224-3 — Women in Literature 1**

Women in Literature is an investigative reading course in which fiction written by women will be examined from a feminist perspective. Discussions will employ techniques of literary criticism to establish themes and stylistic patterns developed by women. This course will survey selections from the 14th century to the present.

Section: A 053

Lecture: Thursday 7:00 - 10:00 p.m.

Instructor: Joanne Nakonechny



FOR THOSE STUDENTS WHO MIGHT BE PREPARED TO COMMUTE, THE FOLLOWING COURSES ARE SCHEDULED FOR KITIMAT. PERSONS WISHING MORE INFORMATION ON THESE COURSES SHOULD CONTACT THE COLLEGE OFFICE IN TERRACE (635-6511) OR KITIMAT (632-4766).

ART 101 - Design Fundamentals	- Monday 7:00 - 10:00 p.m.
ART 201 - Painting I	- Wednesday 7:00 - 10:00 p.m.
ENGLISH 201 - English Literature 1300 - 1600	Thursday 7:00 - 10:00 p.m.
MATHEMATICS 081 - College Prep. Math.	- Tuesday 7:00 - 10:00 p.m.
PHILOSOPHY 101 - Intro. to Philosophy	- Thursday 7:00 - 10:00 p.m.
SOCIOLOGY 101 - Intro. to Sociology	- Tuesday 7:00 - 10:00 p.m.



## NORTHWEST COMMUNITY COLLEGE —SPECIAL PROGRAMS—

The following Special Programs of Northwest College will be holding workshops and seminars at various times throughout the winter. Although these programs will be advertised locally, people who are interested should contact the college and have their name put onto the special programs mailing list.

### EARLY CHILDHOOD EDUCATION

There is a need for trained personnel to work with young children in day care centers, parent participation pre-schools, private nursery schools and kindergartens. The Early Childhood Education program is designed to prepare students to qualify as supervisors in pre-school centers licensed by the Community Facilities Board.

Admission Requirements:

1. Completion of Grade 12 and evidence of good student potential.
2. Mature students may be admitted without Grade 12 if they show through interview, the ability to achieve desired academic work.
3. Applicants must have had some experience in the care of children under six years, particularly with groups of children. References certifying that the experiences were successful are required at the time of interview.
4. Persons accepted for the course must have presented a medical report verifying that there are no indications that the applicant's future employment will be hindered by a present physical, mental or emotional problem. Current T.B. certificates must be presented before admission to the course.

The training program requires a serious investment of time, and in emotional and physical energy; therefore the student should make arrangements so that these will be in conflict with personal interests.

This program will be offered during the day at the Terrace campus.

Selected courses will be offered in the evening and on weekends in other communities.

Fees for courses in this program are \$25.00 per course or a maximum of \$125.00 per semester.

### LABOUR EDUCATION PROGRAM

Presently under development is a program designed to serve the trade union organizations, workers and the general public. Presentation will be through individual short courses, seminars, workshops as well as an extended program of courses. These courses will be made available throughout the College Region.

The program will offer material useful to those engaged in all aspects of practical trade union work: bargaining, grievance procedures, stewards training, litigation, media skills, elements of collective agreements, and arbitration. It will provide unorganized workers interested in trade unionism with an introduction to labour rights. This will include a basic orientation in the legislative framework of certification and trade union organization.

The program will introduce courses which will develop an understanding of the economic, social, and political environment in which trade unions operate. There will be an opportunity to study business organization. Corporate organization, structure and law, management conceptions of 'labour relations', interpretations of company financial statements, production management techniques and corporate political strategies would form some of the elements of a course in business organization. The program will provide for the study of the labour movement: the movements's history, social impact, literature and art.

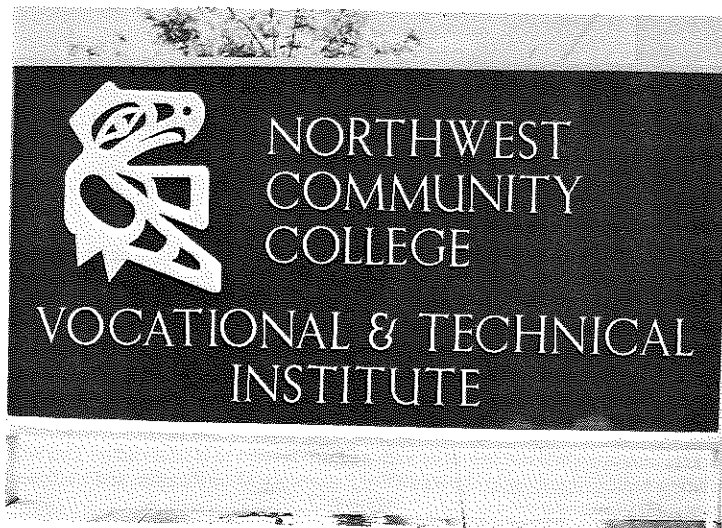
## **PROGRAMS IN ABORIGINAL STUDIES**

Northwest Community College offers a diverse series of programs designed to serve the Native population in the College area. Grouped under the title 'Aboriginal Studies' the courses and workshops which are developed take a hard and realistic look at the history, lifestyle and politics of the Native nations of the Northwest.

### **1. Professional Studies Programme**

This is a uniquely designed program of university-transfer courses developed especially for Native workers involved in jobs servicing their people. Through a carefully-selected list of readings, subjects, quests speakers and films, students take a modelled look at a whole host of topic areas, such as human behaviour, government structures, land and resources, law, racial stereotypes, sexual stereotypes and political systems. Students maintain their jobs while at school as classes are given for one week every month. Financial support is provided and travelling tutorial help supports students who lack confidence and / or proper study habits.

**For Further Information, Please Contact:  
NORTHWEST COMMUNITY COLLEGE  
5311 McConnell Ave., Terrace, B. C. Phone 635-6511  
or write to:  
P.O.Box 726, Terrace, B.C. V8G 4C2**



## COMMUNITY EDUCATION SERVICES CALENDAR

Northwest College and School District #88 Community Education Services calendar will be delivered to your door in mid-September, 1978.

Registration will be held Saturday, September 23, 1978, 12:00-7:00 p.m. at the Terrace Arena Banquet Room.

Look for courses in:

- Basic Education
- Languages
- Arts and Crafts
- Home Skills
- General Interest
- Business
- U.B.C. 300 + 400 level education courses.

Many workshops, seminars and films of interest to both working people and stay-at-homes are included in this calendar.

All (except U.B.C. ones) begin the first week in October, 1978.

For further information please contact:

Frances Long  
Community Education Services  
Co-ordinator  
3205 Kenney Street  
Terrace School Board  
635-4931